



**TO: BOYS WRESTLING COACH**

**FROM: JERRY SCHNIEPP, COMMISSIONER  
JOHN LABETA, ASSISTANT COMMISSIONER**

**DATE: SEPTEMBER 23, 2015**

**RE: 2015-16 WRESTLING PRESEASON BULLETIN**

1. **PRESEASON ADVISORY MEETING**  
**October 13, 2015** - 4:30 p.m. at the San Diego Hall of Champions, Board Room.
2. **SEEDING MEETINGS**  
**Divisionals – February 17, 2016** - 5:30 p.m. San Diego Hall of Champions.  
**Masters – February 24, 2016** - 5:30 p.m. San Diego Hall of Champions, in the Banquet Room on the Main Floor.
3. **POST-SEASON ADVISORY MEETING**  
**March 14, 2016** - 4:30 p.m., San Diego Hall of Champions, Center Court.
4. **2015-16 RULES BOOK**  
A copy of the 2015-16 National Federation Wrestling Rule Book is being mailed to schools for the head varsity coach. It is the official rule book for the CIF and will govern all interscholastic wrestling competition in the San Diego Section unless otherwise provided in the Green Book or bulletins. Please note carefully the rules book changes from those by which the CIF operated during the 2014-2015 season.
5. **GREEN BOOK**  
Coaches are advised to review general eligibility rules as well as special rules for wrestling in the 2015-16 Green Book. Copies of the Green Book are made available to school administrators in August. For more information contact your school administration or go to the CIFSDS website, under Green Book at [www.cifsds.org](http://www.cifsds.org).
6. **RECOMMENDED GUIDELINES FOR GAME MANAGEMENT**  
The form titled *Recommended Guidelines for Game Management* is available online under forms, miscellaneous at [www.cifsds.org](http://www.cifsds.org).
7. **ORGANIZED TEAM PRACTICE**  
The starting date for official before and after school wrestling team practice is **Saturday, November 14, 2015**.

8. **MAXIMUM COMPETITION**  
**WRESTLERS WILL BE ALLOWED A MAXIMUM OF 40 COMPETITION MATCHES PRIOR TO THE LEAGUE TOURNAMENT.**
- In tournaments, every match in which the wrestler competes counts as one match.
  - In dual meets, triangular, double-duals, dual meet tournaments, etc., every match that the wrestler has counts as one match.
  - A wrestler in violation of the maximum 40 matches will be ineligible from further competition during that wrestling season.

**COMPETITION DEFINED** - Any competition involving two schools shall constitute a dual meet, and any competition involving more than two schools shall constitute a tournament. Competition is defined as wrestling activity in which any match and/or team score is determined and/or the service of a wrestling official is used. East League and CIF Section shall take action necessary to enforce this provision.

9. **MANDATORY WRESTLING WEIGHT MANAGEMENT PROGRAM**  
See bulletin Weight Management program for the 2015-2016 Wrestling Season - **NOT AVAILABLE FROM STATE AS OF THIS BULLETIN DISTRIBUTION DATE**. Please visit the CIFSDS website [www.cifsd.org](http://www.cifsd.org) - click on Sports - click on Wrestling for updates.

10. **COMPETITION DATES**  
**November 25, 2015** - First possible interscholastic contest.  
**February 12, 2016** - Last possible league competition.

11. **“ETHICS IN SPORTS” POLICY**  
Coaches are reminded of the “ETHICS IN SPORTS” Policy:

**EJECTION POLICY:**

Any player whose conduct merits ejection from a game by an official for acts of gross unsportsmanlike conduct shall be disqualified from participating in the remainder of the game and will be subject to the following penalties:

In all sports with the exception of football, the penalty will be ejection from that contest and a 3 or 6 game/match suspension; in the sport of football, the penalty will be ejection from that contest and a 3 game suspension.

Any athlete ejected for act of this nature is required to meet with the CIFSDS Commissioner or Assistant Commissioner at an agreed upon time prior to returning to play.

Ejections for reasons other than “gross unsportsmanlike conduct” will result in a penalty of ejection from that contest and a one (1) game/match suspension. A one game suspension may not be appealed.

After the suspension from play, the student may only return after certification by the school principal or his/her designee that the student(s) has completed a conference with a school administrator. The appropriate form indicating the completion of the conference must be filed with the San Diego Section office prior to “rejoining the team” (“rejoining the team” is in reference to competition, not practice).

A second ejection from a game or contest will cause the student to be suspended for the remainder of the season. Participation of a player who was ejected from a previous contest, who knowingly or unknowingly participates in the next contest, will result in the forfeiture of that contest.

Players are permitted to practice with the team and attend contests, but not in game uniform, during the period of suspension.

A copy of the revised policy must be signed by each coach, athlete and parent/guardian before attending or participating in a contest. The signed copies are to be filed at each school site, and each Principal is to forward a compliance form to the CIFSDS Office.

NOTE: Compliance form due dates are as follows:

**Fall Sports = September 1, 2015; Winter Sports = November 23, 2015; Spring Sports = March 1, 2016.**

12. **REMINDER - COACHING COMPENSATION (CIF STATE BYLAW 507)**

**A coach shall not be reimbursed for coaching services from any source other than the school funds without the approval of the school's governing board, nor be subject to any bonus arrangement dependent upon the success of the school's team.**

13. **COACHING CERTIFICATION**

All coaches (paid or unpaid) must be certified in coaching education. Coaches may become certified online for a fee of \$52.00 or in a classroom setting by one of California's instructors. For information, go to State CIF website [www.cifstate.org](http://www.cifstate.org) and click on one of the following links:

- About CIF Coaching Education Program
- CIF/NFHS Online Coaching Education Course (\$52.00 per coach)

14. **SANCTIONED TOURNAMENT/INVITATIONAL EVENTS**

**CIFSDS SANCTIONING-** CIFSDS will sanction tournaments/invitationals when invited schools are from California, Arizona, Nevada, Oregon, Alaska, Hawaii, Canada, or Mexico and/or from non-border states when invited schools are eight (8) or fewer or invited states are five (5) or fewer. **New CIFSDS sanction application is on website [www.cifsd.org](http://www.cifsd.org) - Tournaments.**

CIFSDS sanction is necessary for all tournaments at all levels (Varsity, JV, Frosh, and Club). Tournament/Invitational Directors must provide the assignment secretary with a sanction number (issued by CIFSDS office) **before** officials may be assigned. Please check the CIFSDS website for approved sanction numbers under tournaments, at [www.cifsd.org](http://www.cifsd.org).

**REMINDER - Sanctioning deadline for CIFSDS applications for fall sports is June 1; winter sports are September 1; and spring sports are December 1 (\$25 sanction fee). After deadline \$100 late fee will be assessed for a total of \$125.**

**NFHS SANCTIONING-** Sanction requests involving more than five (5) non-border states or more than eight (8) schools from non-border states and/or schools from foreign countries (excluding Canada and Mexico) must be sanctioned online through NFHS. For sanctioning procedures go to [www.nfhs.org](http://www.nfhs.org). NFHS will notify the CIFSDS office when sanctioning process is completed for CIFSDS schools and will post approved events on their website.

Please call the CIFSDS office 858-292-8165 x11 or email [carltoncifsd@gmail.com](mailto:carltoncifsd@gmail.com) if you have any questions.

15. **PLAYOFF FORMAT - DIVISIONAL TOURNAMENTS**

San Diego CIF Wrestling Playoffs will be conducted in four enrollment divisions based upon October 2014 CBED enrollment figures for grades 9-12 (posted on CIFSDS website).

16. **2015-16 CHAMPIONSHIPS (PROPOSED)**

Dual Meet Finals February 6, 2016 (Home of the higher seeds)

◆ Divisions I-IV - **February 20, 2016**

Division I -Site: TBA

Division II -Site: TBA

Division III -Site: TBA

Division IV -Site: TBA

◆ Masters Meet - **February 26-February 27, 2016 SITE TBA**

◆ State CIF Championship - Rabo Bank Arena, Bakersfield - **March 5-6, 2016.**

17. **OFFICIALS ASSOCIATION--RULES INTERPRETATIONS--ASSIGNMENT SECRETARY**

**San Diego County Wrestling Officials' Association**, please contact:

Mark Dexter, Assignment Secretary- [markkd@cox.net](mailto:markkd@cox.net) or 619-368-5023 (cell)

**Imperial Valley Officials Association- Wrestling**, please contact:

Dale Ramey, President/Assignment Secretary - [dramev01@yahoo.com](mailto:dramev01@yahoo.com) or 760-344-4420.

18. **"UNOFFICIAL" COMPETITION**

Coaches are reminded that the State CIF Bylaw 600.G. #39-41 (page 39 of 2013-14 CIFSDS Green Book) prohibits unattached competition in individual sports in a CIF contest. All competitors must meet all eligibility rules and must be eligible to score.

The CIF-San Diego Section is beginning its **19th year** of a High School Sports Sponsorship Program to help offset the ever-increasing costs of conducting section championships in all sports. The purpose of the program is to seek and solicit support (financial, products, or services) from individuals, organizations, and/or businesses desiring to sponsor CIFSDS activities; whereby the CIFSDS provides specific sponsorship acknowledgment. The goal of the High School Sports Sponsorship Program is to have each of the 24 section-approved sports sponsored by a wide range of the San Diego community. For an application or more information on the sports sponsorship program, please contact the CIF-San Diego Section office or visit our web site at [www.cifsds.org](http://www.cifsds.org)

Distribution: Wrestling Coach  
Athletic Director  
Conference Presidents/Schedulers  
Tony Guerrero, Tom Duncan, Mark Dexter - SDCWOA  
Dale Ramey - IVOA/Wrestling  
Tim Tyler- Tourney Director

(wrestling\preseason-wrest-2015)

# Partners, Sponsors of State CIF, CIF San Diego Section

## Title Sponsor CIF San Diego Section



## State CIF Supporting Sponsors

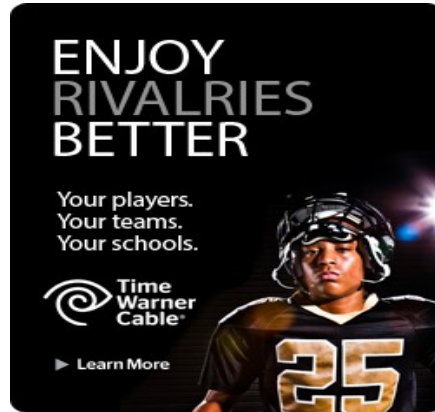


## State CIF Supporting Sponsors



# CIF San Diego Section Sponsors, Partners

## Official Media Partner



## Supporting Sponsors



## CIF San Diego Section Official Ball Sponsor



**CIF San Diego Section Official Restaurant Sponsor**



**CIF San Diego Section Cymer Scholars Sponsor**

**CYMER®**

**CIF San Diego Section Football Sponsor**



# CIF San Diego Section Photographer

“CIF OFFICAL PHOTOGRAPHER”

*Thom Vollenweider*

P H O T O G R A P H Y

## CIF San Diego Section Official Partners





## **CIF San Diego Section Supporting Sponsors**

**Laces Running Co.**

**Rob Bryson**

**Carl Goff**

**Liz Mullarkey**

**HL Corporation**

**Pacific Baseball Umpires**

**Richard and Paula Davila**

**Torrey Pines Men's Club**

**Terry McIntyre**

**Dale & Sehnaz Endreson**

**North County Basketball Officials**

**Laces**